

101(S)-5T & 101(S)-7T Series

101(S)-5T & 101(S)-7T Series Hydraulic Steering Control Units

Load sensing hydraulic steering units for priority-valve pipe mounting systems.

Category: Hydraulic Steering Units

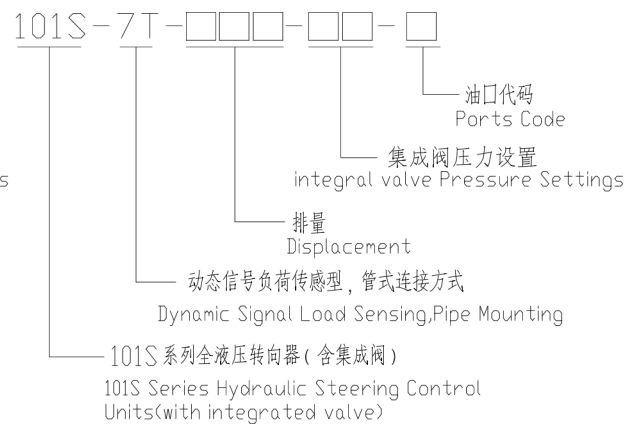
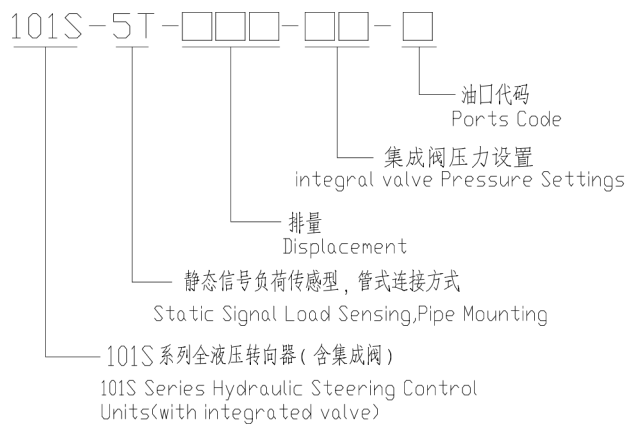
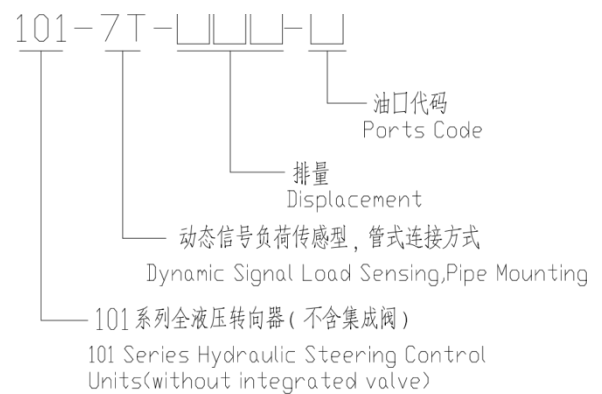
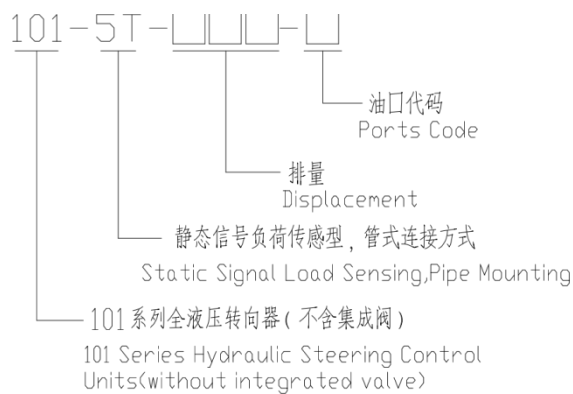
Application: Agricultural Machinery / Construction Equipment / Mobile Hydraulic Systems

101(S)-5T & 101(S)-7T Series Hydraulic Steering Control Units(SCU)

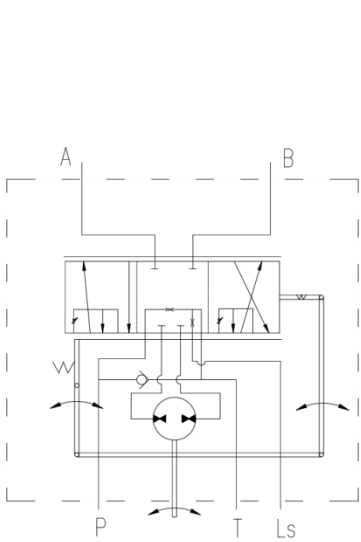
SCU 101S-5T series adopts Pipe mounting and via pipe mounting can be used with YXL Static Signal Load Sensing type priority valve .

SCU 101S-7T series adopts Pipe mounting and via pipe mounting can be used with DYXL Dynamic Signal Load Sensing type priority valve .

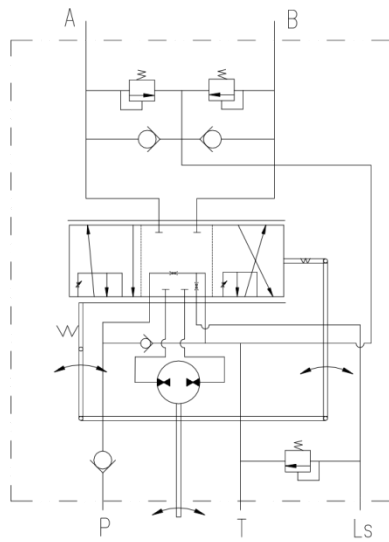
Order code



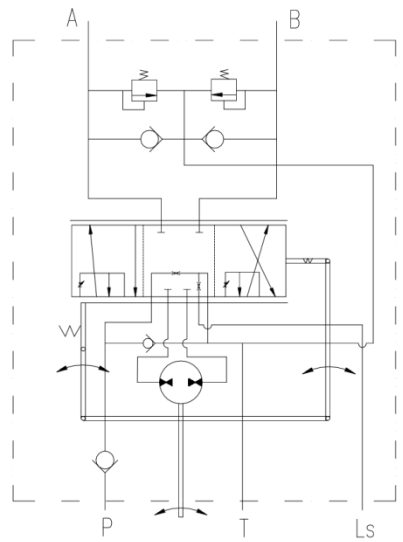
Function Code



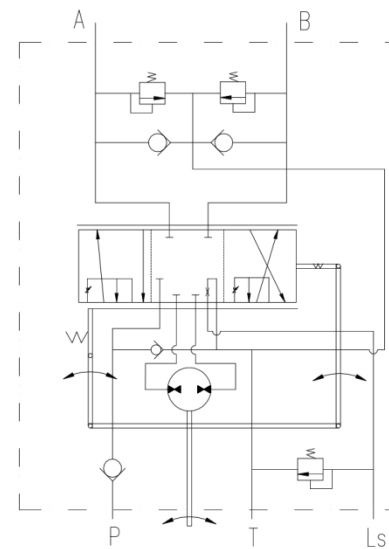
101-5T



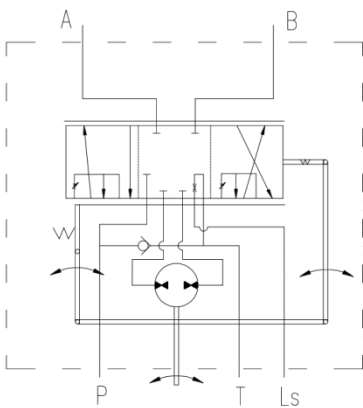
101S-5T



101-7T



101S-7T



101(S)-5T & 101(S)-7T Series Hydraulic Steering Control Units(SCU)

Ports Threads

Code	P, T, A, B oil port	Flange connection threads	Oil port connection thread	Ls oil port	
A	M20X1.5	M10	M12	M12X1.5	
B	M20X1.5 iO'-ring (Φ21.8)			M12X1.5 iO'-ring	
B2	M20X1.5 iO'-ring (Φ22.5)			M12X1.5 iO'-ring	
C	M18X1.5			M12X1.5	
D	M18X1.5 iO'-ring			M12X1.5 iO'-ring	
E	G1/2		M10X1	G1/4	
U	G 1/2 iO'-ring			G1/4 iO'-ring	
M	3/4-16UNF iO'-ring		3/8-16UNC	M12	7/16-20UNF iO'-ring
F				3/8-24UNF	
F2			M10	M10X1	
I		M10	M10		
N		M10X1.25	M10		
K	M20X1.5	M10	M10X1	M12X1.5	
G	M22X1.5	M10	M12	M12X1.5	
Q	M22X1.5 iO'-ring	M10	M12	M12X1.5 iO'-ring	
J	9/16-18UNF	3/8-16UNC	3/8-24UNF	7/16-20UNF iO'-ring	

101-5T&101-7T Order Code

	Pos.1	Pos.2		Pos.3		Pos.4	
101	-	*	T	-	***	-	*

Pos.1 -

5:Static Signal Load Sensing Type

7:Dynamic Signal Load Sensing Type

Pos.2 -

T:Pipe Mounting

Pos.3 -

50、63、80、100、125、160、200、250、280、315、370、400、500、630、740、800、1000

Pos.4 -

A、B、B2、C、D、E、U、M、F、F2、I、N、K、G、Q、J

Note 1: Ports P, T, L, R Depth : 15 mm; Column Mounting C & V Depth: 16 mm ;Ls Depth: 12 mm
 Note 2: The code of other ports dimensions will be listed in an agreement.

101S-5T&101S-7T Order Code

		POS. 1	POS. 2	POS.3		POS. 4		POS.5		POS.6
101S	-	5	T		-	...	-	..	-	.

Pos. 1 - Function Code

5 : Static Signal Load Sensing Type

7 : Dynamic Signal Load Sensing Type

POS.2 - priority valve connection

T pipe Mounting

Pos.3 - Electrohydraulic control signal connection

omt : No electrohydraulic signal .

Pos.4 - Displacement mL/r

50、63、80、100、125、160、200、250、280、315、370、400、500、630、740、800、1000

Pos.5 - Integrated Valve Parameters

Relief valve pressure settings (Mpa):06、07、08、10、12、14、15、16、17.5

(shock valves pressure settings is 6 Mpa higher than relief valve)

POS.6 - Ports Code

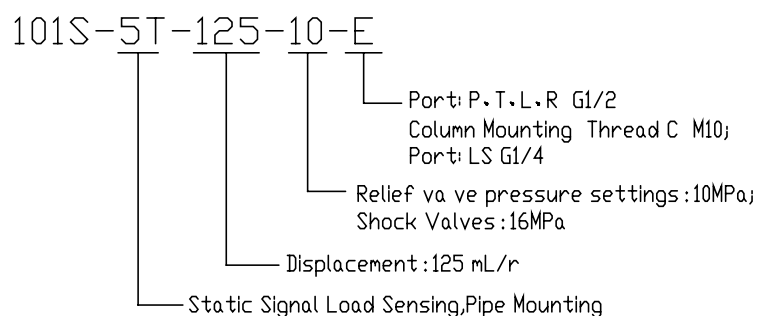
A、B、B2、C、D、E、U、M、F、F2、I、N、K、G、Q、J

Application Example:

101S Series Directional Control Valve, static signal load-sensing type, with pipe-connected priority valve, displacement 125 mL/rev, inlet check valve, safety valve pressure 10 MPa, relief valve pressure 16 MPa. Four oil port threads are G1/2, steering column flange connection thread M10, LS signal port G1/4.

Steering unit order number: 101S-5T-125-10-E

For example:
order code



CONTACT

YUNLINK HYDRAULICS

For product selection, quotation and OEM/ODM inquiries, please contact us.

COMPANY

Hebei Yunlink Industrial Co., Ltd.

Email: sales@yunlinkhydraulic.com

WhatsApp: +86 155 3213 6555

Website: www.yunlinkhydraulic.com

LinkedIn: [linkedin.com/in/peterbai-hydraulics](https://www.linkedin.com/in/peterbai-hydraulics)

Location:

No. 5 Yucai Street, North Industrial Zone

Ningjin County, Xingtai City

Hebei Province, China

WHEN SENDING AN INQUIRY, PLEASE INCLUDE:

1. Product model
2. Thread size / connection type
3. Required pressure and flow rate
4. Quantity
5. Application or equipment model