

Hydraulic Lock Series

---

Hydraulic Lock Series

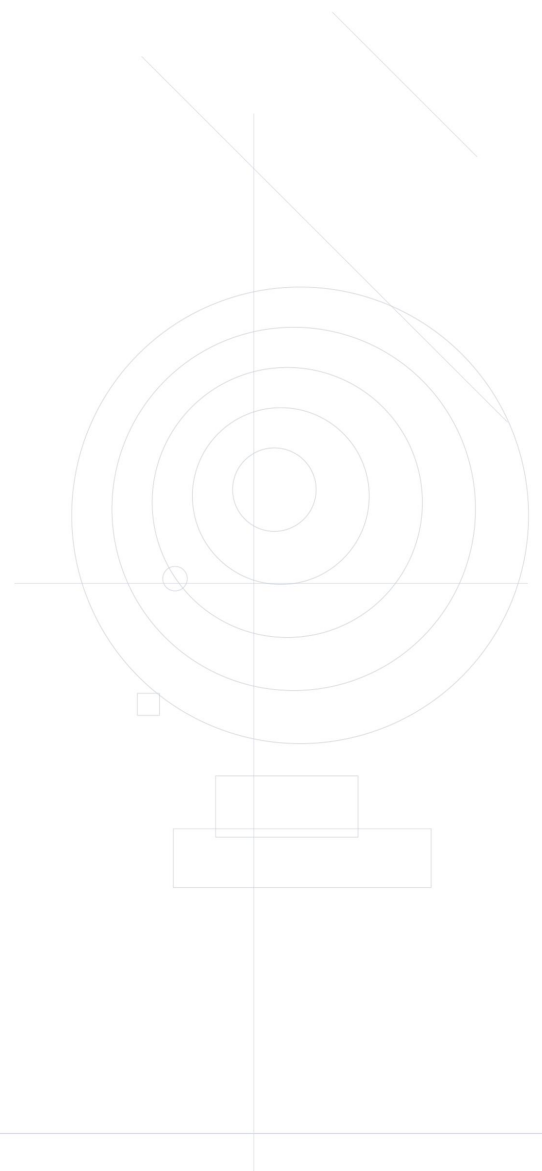
---

Professional hydraulic components for  
mobile machinery and industrial systems.

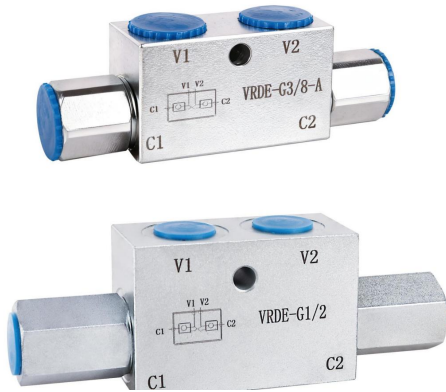
Category: Hydraulic Valves

Application:

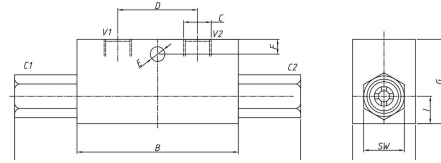
Mobile Machinery / Industrial Hydraulic Systems



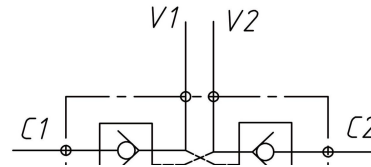
## VRDE | Double Pilot Check Valve



### Dimensions



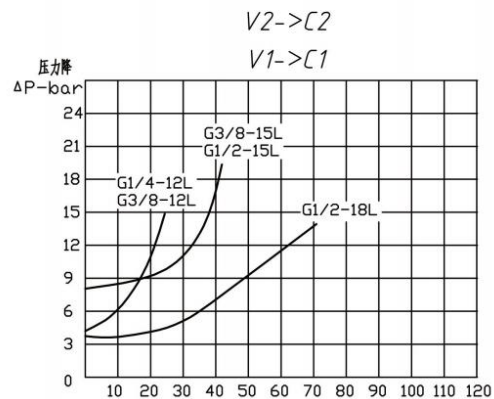
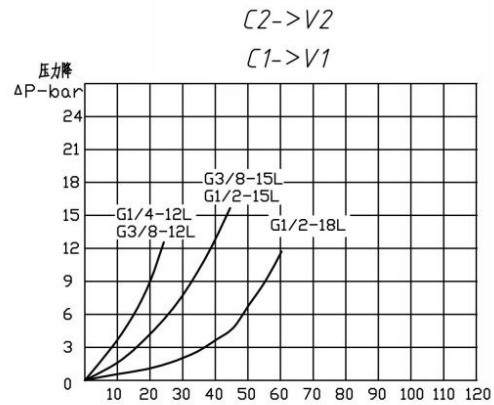
### Hydraulic Symbol



### Technical Data

Body: Steel  
 Valve components: Hardened steel  
 Seals: NBR  
 Mounting: On demand  
 Recommended operating temperature: +40°C to +70°C  
 Maximum operating temperature: +90°C  
 Ambient temperature range: -20°C to +60°C  
 Connection thread: BSPP

### Flow Characteristics



### MODEL CODE

VRDE

①

G1/4

②

### Product Information

**Series Code:** VRDE Type (Double Pilot Check Valve)

**Connection Thread:** BSPP (British Standard Parallel Pipe)

### Model Code / Technical Specifications

Type	Max. Flow (L/min)	Max. Pressure (Bar)	Pilot Ratio	Cracking Pressure (Bar)
VRDE G1/4	20	350	1:4.5	3.5
VRDE G3/8-A	20	350	1:4.5	3.5
VRDE G3/8	50	350	1:4	3.5
VRDE G1/2-A	50	350	1:4	3.5
VRDE G1/2	80	350	1:4	3.5
VRDE G3/4	80	350	1:4	3.5

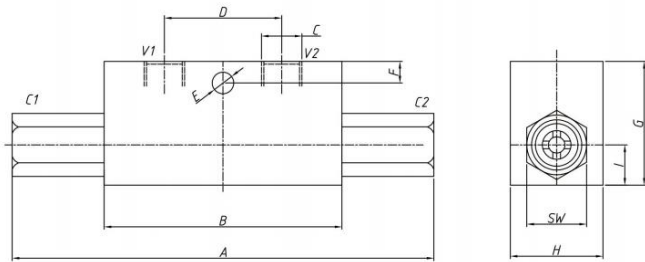
  

Type	A	B	C	D	E	F	G	H	I	SW
VRDE G1/4	115	68	G1/4	38	7	7	40	30	13	24
VRDE G3/8-A	115	68	G3/8	38	7	7	40	30	13	24
VRDE G3/8	139	80	G3/8	40	8.5	15	50	40	16	27
VRDE G1/2-A	144	80	G1/2	40	8.5	15	50	40	16	27
VRDE G1/2	173	90	G1/2	40	8.5	15	60	40	20	30
VRDE G3/4	175	90	G3/4	42	8.5	15	60	40	20	36

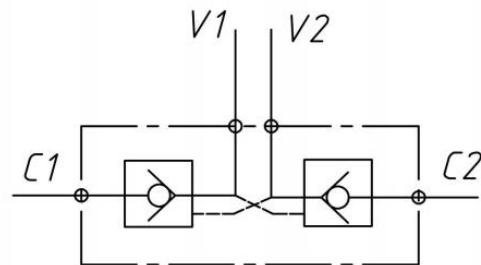
VRDE 03 F FF-G | Double Pilot Check Valve



Dimensions



Hydraulic Symbol



Model Code / Technical Specifications

Model Code	Max. Flow (L/min)	Max. Pressure (Bar)	Pilot Ratio	Port Size
VRDE 01 F FF	30	350	1:4.5	G1/4
VRDE 015 F FF	30	350	1:4.5	G3/8
VRDE 02 F FF	50	350	1:4	G3/8
VRDE 025 F FF	50	350	1:4	G1/2
VRDE 03 F FF	80	350	1:4	G1/2
VRDE 04 F FF	120	350	1:4	G3/4

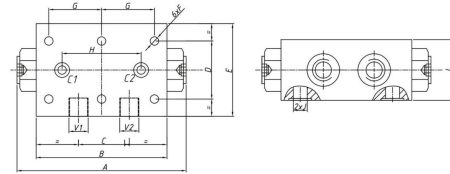
Dimensions

Model Code	Reference	L	L1	L2	L3	L4	M	H	S	Weight (kg)
VRDE 01 F FF		68	115	38	5	13	7	40	30	0.69
VRDE 015 F FF		68	115	38	5	13	7	40	30	0.64
VRDE 02 F FF		80	139	40	15	16	8.5	50	40	0.98
VRDE 025 F FF		80	143	40	15	16	8.5	50	40	0.91
VRDE 03 F FF		90	173	40	15	20	8.5	60	40	1.72
VRDE 04 F FF		90	175	42	15	23	8.5	60	40	2.82

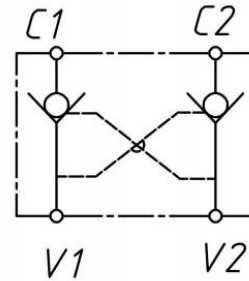
VRDL-FL | Double Pilot Check Valve



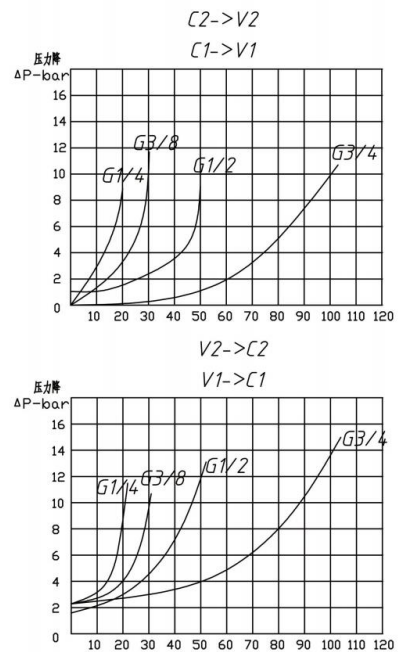
Dimensions



Hydraulic Symbol



Flow Characteristics



Model Code / Technical Specifications

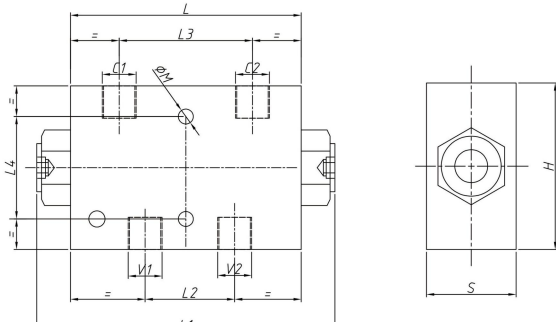
Type	Max. Flow (L/min)	Max. Pressure Steel (Bar)	Max. Pressure Aluminium (Bar)	Pilot Ratio	Cracking Pressure (Bar)
VRDL G1/4 FL	20	350	210	7.1:1	3.5
VRDL G3/8 FL	30	350	210	7.1:1	3.5
VRDL G1/2 FL	50	350	210	4.8:1	3.5
VRDL G3/4 FL	100	350	210	5.4:1	3.5

Dimensions

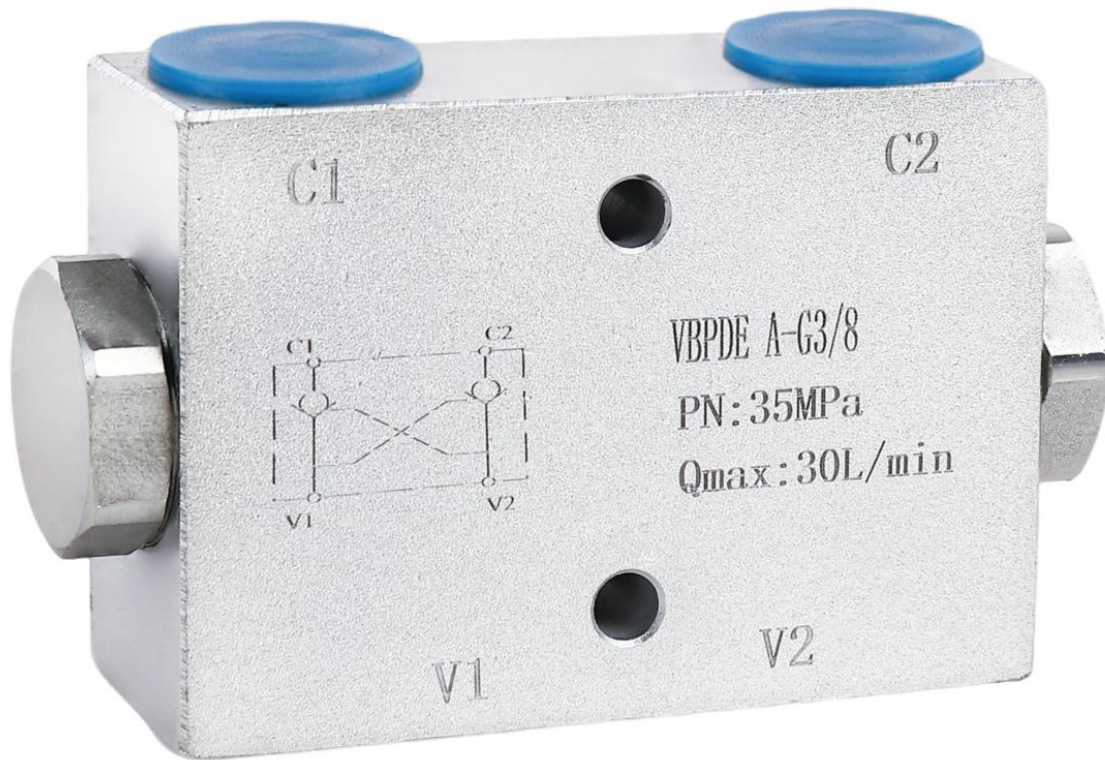
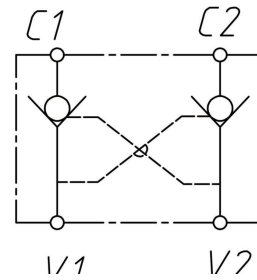
Type	C1-C2 / V1-V2	A	B	C	D	E	F	G	H	I	J	O-ring
VRDL G1/4 FL	G1/4	110	90	32	40	64	Ø6.5	35	62	34	Ø6	9.19×2.62
VRDL G3/8 FL	G3/8	110	90	32	40	64	Ø6.5	35	62	34	Ø6	9.19×2.62
VRDL G1/2 FL	G1/2	142.5	114	34	40	73	Ø8.5	40	65	35	Ø10	15.54×2.62
VRDL G3/4 FL	G3/4	166	140	46	51	83	Ø10.5	48	96	44	Ø14	15.54×2.62

# VBPDE A | Double Pilot Check Valve

Dimensions



Hydraulic Symbol



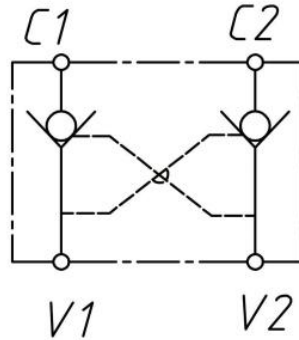
Model Code / Technical Specifications and Dimensions

Type	Pilot Ratio	Max. Flow (L/min)	Max. Pressure (Bar)	Port Size	L	L1	L2	L3	L4	M	H	S	Weight (kg)
VBPDE G3/8 A	1:7.1	30	350	G3/8	80	96	30	52	44	8.5	60	30	1.03
VBPDE G1/2 A	1:4.5	55	350	G1/2	114	129	39	80	40	8.5	70	35	2.19

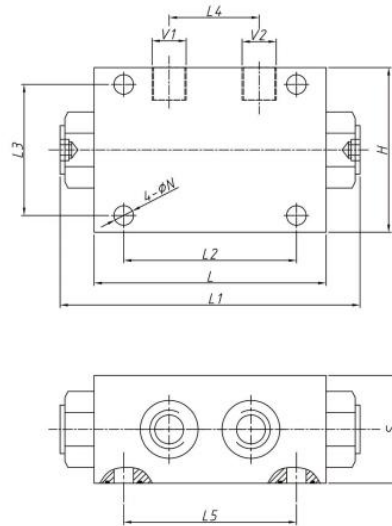
SO-K8L-41B | Plate Type Double Pilot Check Valve



Hydraulic Symbol



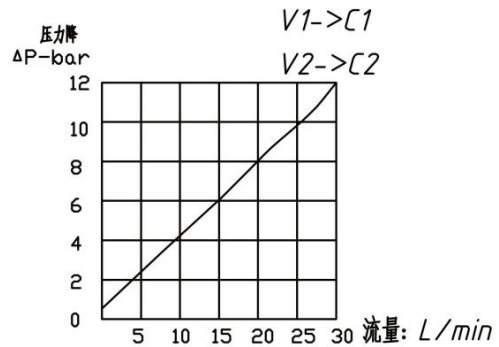
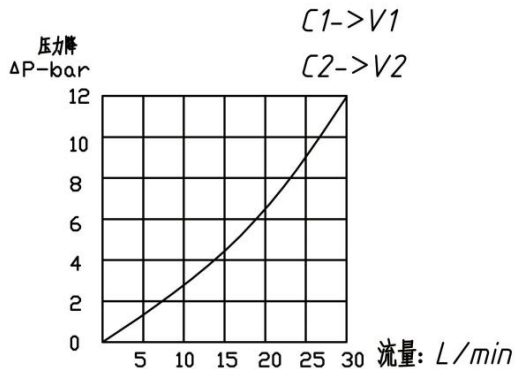
Dimensions



Model Code / Technical Specifications and Dimensions

Type	Max. Flow (L/min)	Max. Pressure (Bar)	Pilot Ratio	V1-V2	L	L1	L2	L3	L4	L5	H	S	N
SO-K8L-41B	40	350	5:1	M14x1.5	80	105	55	46	26	51	64	35	11

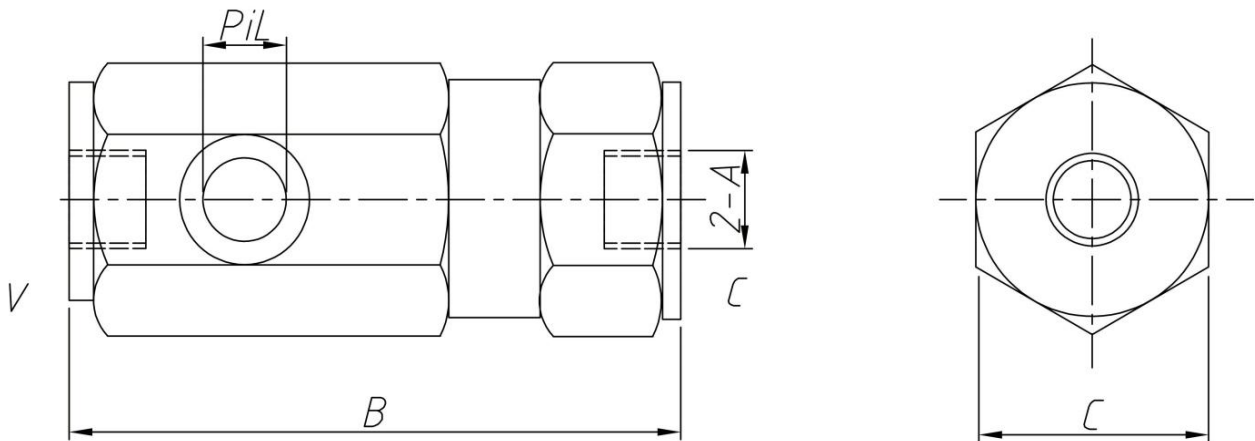
Flow Characteristics



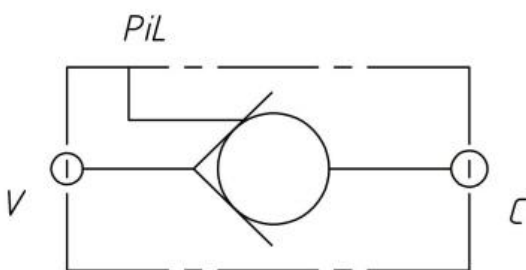
VRPE | Inline Pilot Check Valve



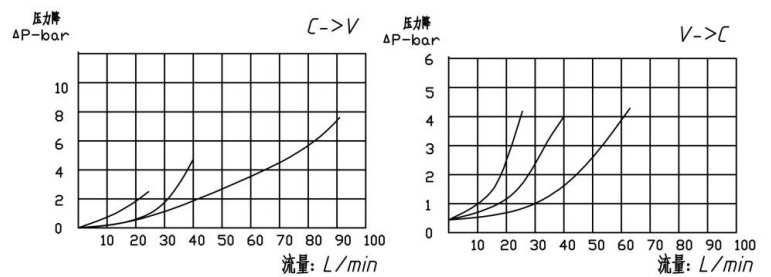
Dimensions



Hydraulic Symbol



Flow Characteristics



Model Code / Technical Specifications and Dimensions

Type	Pilot Ratio	Max. Flow (L/min)	Max. Pressure (Bar)	V1-V2 / C1-C2	PIL	L1	S	S1	Weight (kg)
VRPE 1/4	1:3.6	20	350	G1/4	G1/4	102	42	12.5	0.69
VRPE 3/8	1:4.5	30	350	G3/8	G1/4	107	42	12.5	0.90
VRPE 1/2	1:4.6	45	350	G1/2	G1/4	120	42	12.5	1.04
VRPE 3/4	1:4.5	80	350	G3/4	G1/4	145	55	14	2.30
VRPE 1	1:3.5	120	350	G1	G1/4	165	55	14	2.35

## CONTACT

## YUNLINK HYDRAULICS

---

For product selection, quotation and OEM/ODM inquiries, please contact us.

### COMPANY

---

**Hebei Yunlink Industrial Co., Ltd.**

**Email:** sales@yunlinkhydraulic.com

**WhatsApp:** +86 155 3213 6555

**Website:** www.yunlinkhydraulic.com

**LinkedIn:** linkedin.com/in/peterbai-hydraulics

**Location:**

No. 5 Yucai Street, North Industrial Zone  
Ningjin County, Xingtai City  
Hebei Province, China

### WHEN SENDING AN INQUIRY, PLEASE INCLUDE:

---

1. Product model
2. Thread size / connection type
3. Required pressure and flow rate
4. Quantity
5. Application or equipment model