

VBCD SE-G

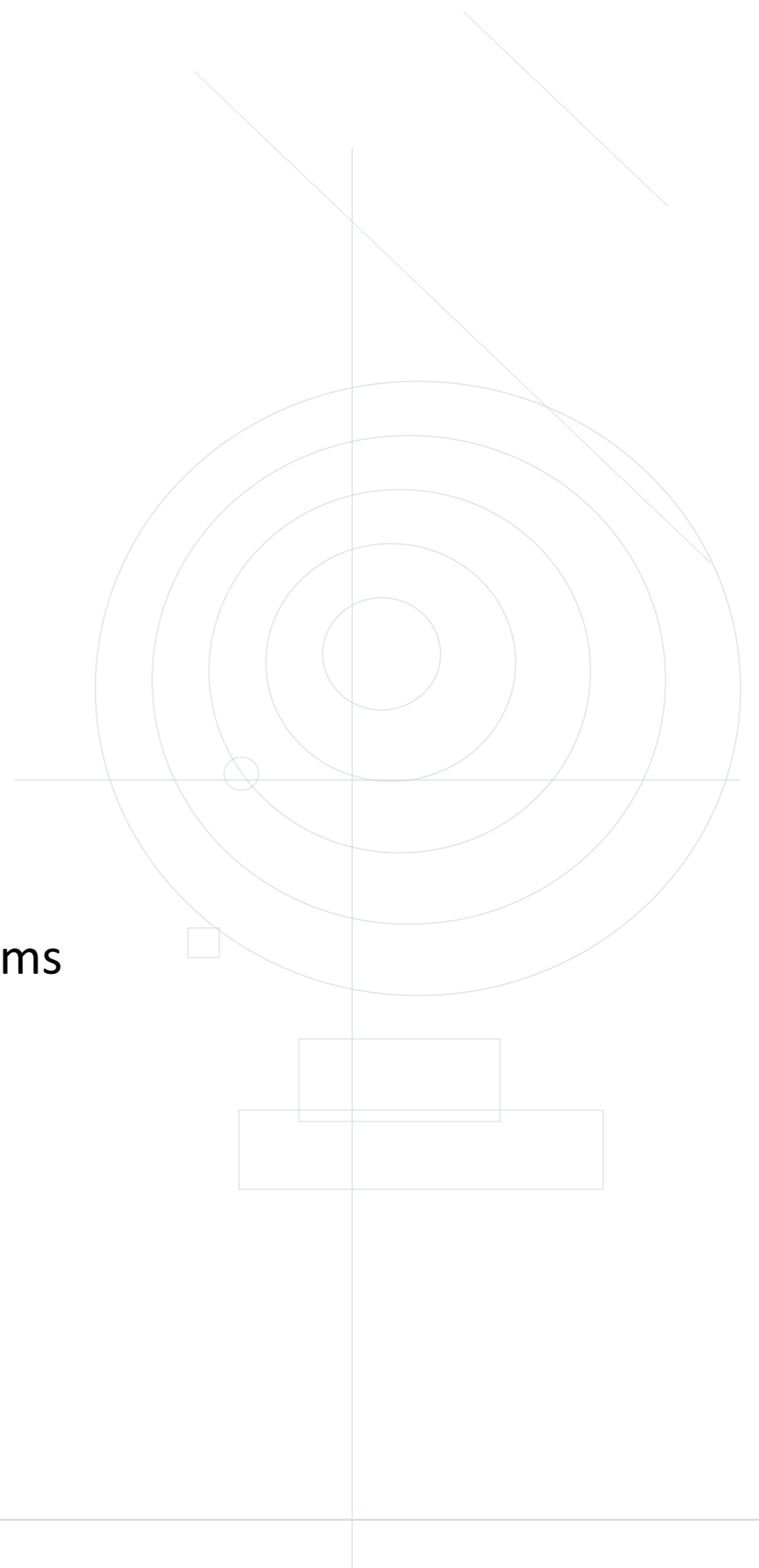
Single-direction Counterbalance Valve

Professional hydraulic components for mobile machinery and industrial systems.

Category: Single-direction Counterbalance Valve

Application:

Compact Mobile Machinery / Industrial Hydraulic Systems

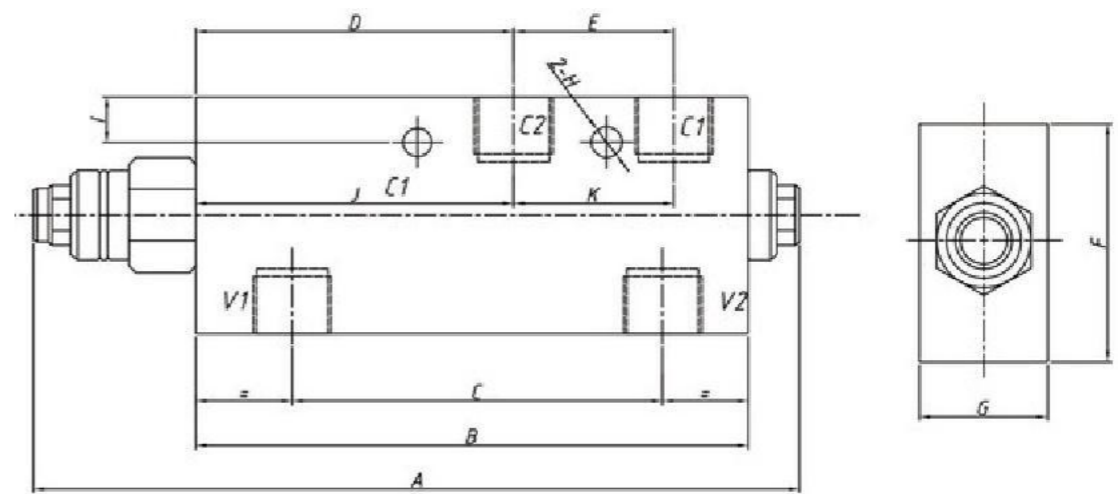


VBCD SE-G

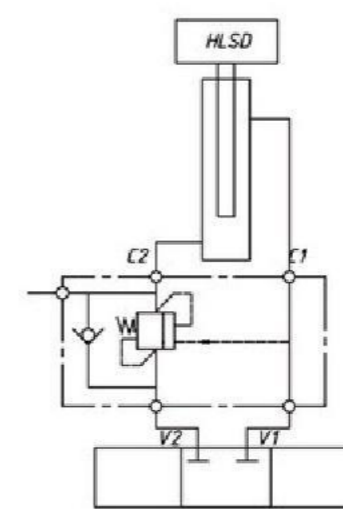
VBCD SE/G Single-direction Counterbalance Valve



DIMENSIONS



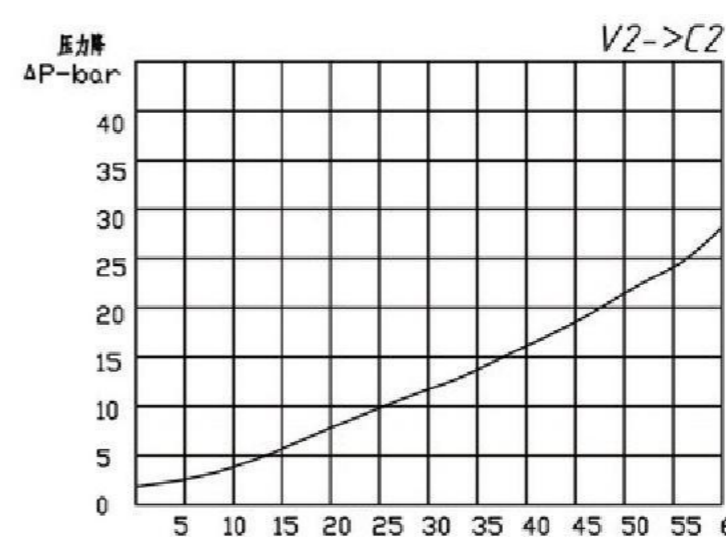
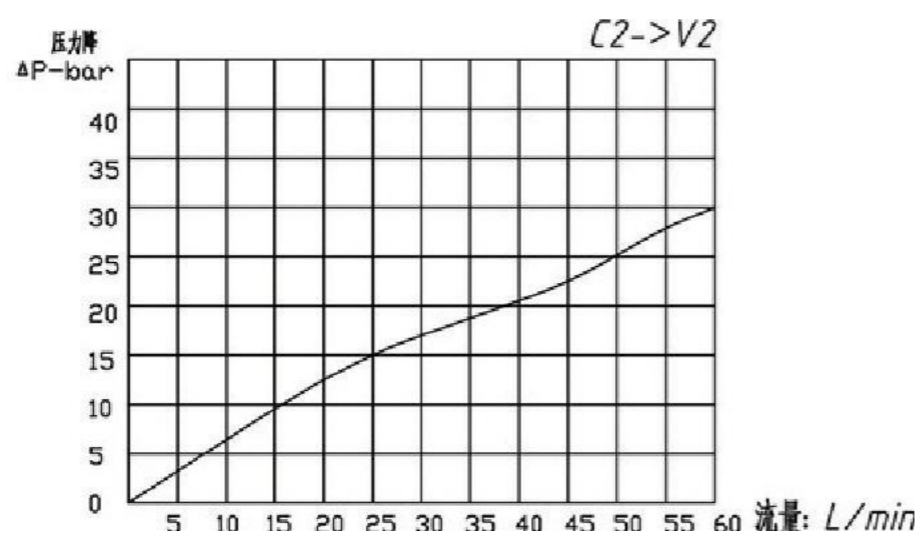
SYMBOL



MODEL CODE

Type	Max Pressure (Bar)	Max Flow (L/min)	Pilot Ratio	V1-V2 / C1-C2	B	C	E	F	G	J	R	I
VBCD G3/8 SE	350	40	4.5:1	3/8	109	70	40	55	30	32	39	8.5
VBCD G1/2 SE	350	60	4.5:1	1/2	109	70	40	65	35	32	39	8.5
VBCD M18 SE	350	40	4.5:1	M18×1.5*	109	70	40	55	30	32	39	8.5
VBCD M22 SE	350	60	4.5:1	M22×1.5*	109	70	40	65	35	32	39	8.5

FLOW DIAGRAM



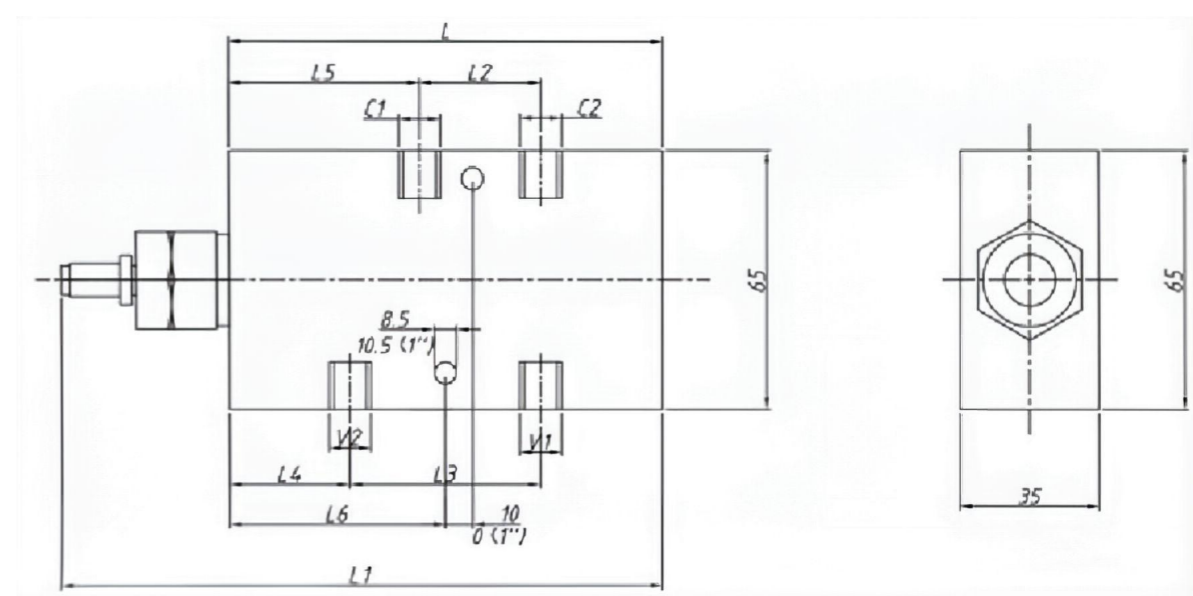
The above models are supplied without a pressure tap. If a pressure tap is required, add M after the model.

VBCD SE-A

VBCD SE/A Single-direction Counterbalance Valve



DIMENSIONS



MODEL CODE

Type	Max Flow (L/min)	Max Pressure (Bar)	Pilot Ratio	Port Size (V1-V2 / C1-C2)
VBCD G1/4 SE/A	20	350	4.5:1	G1/4
VBCD M14 SE/A	20	350	4.5:1	M14×1.5
VBCD G3/8 SE/A	40	350	4.5:1	G3/8
VBCD M18 SE/A	40	350	4.5:1	M18×1.5
VBCD G1/2 SE/A	60	350	4.5:1	G1/2
VBCD M22 SE/A	60	350	4.5:1	M22×1.5
VBCD G3/4 SE/A	95	350	5.5:1	G3/4
VBCD 1 SE/A	160	350	5.5:1	G1

Type	L	L1	L2	L3	L4	L5	L6	H1	H	S	Weight (Kg)
VBCD G1/4 SE/A	110	160	40	70	20	50	55	44	60	30	1.31
VBCD M14 SE/A	110	160	40	70	20	50	55	44	60	30	1.31
VBCD G3/8 SE/A	110	160	40	70	20	50	55	44	60	30	1.26
VBCD M18 SE/A	110	160	40	70	20	50	55	44	60	30	1.26
VBCD G1/2 SE/A	110	160	40	70	20	50	57.5	44	65	35	1.2
VBCD M22 SE/A	110	160	40	70	20	50	57.5	44	65	35	1.2
VBCD G3/4 SE/A	130	181	54.5	78.5	24.5	48.5	60	44	80	40	3.26
VBCD 1 SE/A	156	213	70	109.5	23.5	63	75	70	90	50	5.52

CONTACT

YUNLINK HYDRAULICS

For product selection, quotation and OEM/ODM inquiries, please contact us.

COMPANY

Hebei Yunlink Industrial Co., Ltd.

Email: sales@yunlinkhydraulic.com

WhatsApp: +86 155 3213 6555

Website: www.yunlinkhydraulic.com

LinkedIn: [linkedin.com/in/peterbai-hydraulics](https://www.linkedin.com/in/peterbai-hydraulics)

Location:

No. 5 Yucai Street, North Industrial Zone
Ningjin County, Xingtai City
Hebei Province, China

WHEN SENDING AN INQUIRY, PLEASE INCLUDE:

1. Product model
2. Thread size / connection type
3. Required pressure and flow rate
4. Quantity
5. Application or equipment model